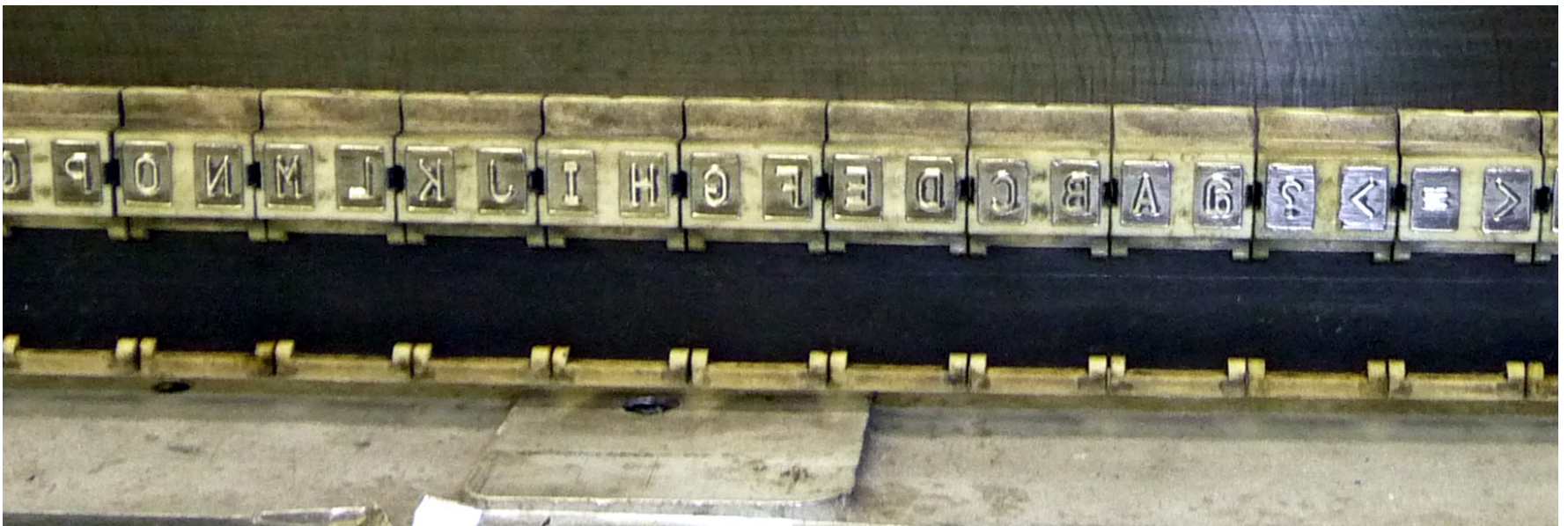


# Data 100 / ODEC Chain Printer

The printer on display is a chain printer. It has three sets of the 64 characters it can print on a belt that continuously runs them across the paper.



To print, hammers hit the paper against the ribbon when the correct character is under the hammer. This printer has 66 hammers which it moves back and forth to print the 132 print positions. This printer is the low end of the chain printer line. It only prints 125 lines per minute. High end printers would print over 1000 lines per minute.

